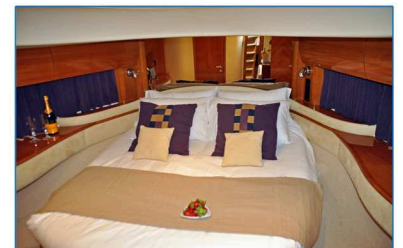
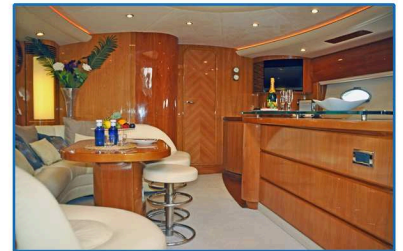


Escape 20.3m



OVERVIEW

Escape is a Princess V65, measuring just over 20m in length. Known as a sport yacht, the V65 combines outstanding performance with superyacht levels of sophistication.

Escape has a hard top with an electrical sliding roof perfect for enjoying the sun during the day and covered dining in the evening.

Escape has 3 cabins including a large owners suite, a luxury guest double and a spacious twin all with en-suite facilities. The saloon and galley are combined together to give a wonderful living area.

Outside she has 3 sunbathing areas, and a wet bar with BBQ/grill. She has had a full refit and upgrade in 2011/12 including Bluray, DVD, PS3, LED TV's and full surround sound.

THE FACTS

- Overall length 66 ft (20.3m)
- Sleeps 6 in 3 cabins
- Separate crew cabin
- 12 guests for day trips
- A slick, well equipped galley
- 3 double sunbathing beds
- Top speed of 38 knots
- Wet bar and BBQ area
- Twin Mann 1300HP Diesel Engines
- Fully air conditioned

PRICING (in euros)

	MAY & OCTOBER	JUNE & SEPTEMBER	JULY & AUGUST
PER WEEK:	20,000	20,000	24,000
PER DAY:	2,950	2,950	3,500

Price includes Skipper & mooring in home berth. Excludes IVA & fuel.

ensuring the ultimate cruising experience...